

Technician Tool Mobile App



Introduction

Technician Tool Mobile Application is an iOS user interface for day-to-day operation of StruxureWare Building Operation software. Technician Tool can connect to Automation Servers and Enterprise Servers, and provides easy access to the system from anywhere in the world.

Features

Technician Tool provides a portable, simplified user interface to access the StruxureWare Building Operation servers using a mobile app. Access the system without using a dedicated workstation or having to carry a laptop around. Users can view and manage values, alarms, schedules, and trend log lists.

Secure user accounts

Users log on using the same account for Technician Tool, WorkStation, and WebStation. No need to remember multiple passwords or user names.

Monitor and change values

Browse the system with the familiar system tree structure. See current values, such as temperature setpoints or lighting settings, and conveniently change them as needed. Even force function block program values to tune equipment.

Simplified alarm view

View active and unacknowledged color-coded alarms in an easy-to-use list. Acknowledge alarms so that other users know actions are being taken.

Easy to read trend logs

The software can trend data in many ways, including a periodic method (every day, hour, minute) and a change-of-value (COV) method that only records when a defined threshold has been passed. These trend logs can be shown in trend lists.

Intuitive schedules

Energy efficiency is achieved when equipment is running only when necessary. Schedules manage that process through a graphical interface that is easy-to-use. View and edit schedules and calendars. Change times with a few simple taps. Schedules go beyond the basic on and off control by enabling direct control of analog values. For example, users can set schedule events to percentages to control lighting levels without writing a program.

Easy access to common objects

Access commonly used values, including schedules, via Custom View. Additionally, you can store your commonly used server addresses and credentials with a friendly name in the Favorites list and organize those Favorites in folders.

Language settings

The interface automatically adapts to the language settings on the device.

Specifications

Server side

StruxureWare Building Operation 1.3 or higher on servers. For more information, see Automation Server and Enterprise Server datasheets.

Client side requirements

Hardware

iPad	Minimum: iPad 1
iPhone	Minimum: iPhone 4
iOS	Minimum: iOS 5

Application

Building Operation Technician Tool is available directly from the iTunes App Store. The app appears as SmartBldgOp on the device when installed.

Link to the application: <https://itunes.apple.com/app/building-operationtechnician/id578228250>

Licensing

Site requires Technician Tool mobile access license for server log on. See part numbers to order license.

Part numbers

SW-MAP-1, Technician Tool Mobile App access option – 1 user For 1 concurrent user for site per license (No maintenance subscription included)	SXWSWMAPP00001
SW-MAP-2, Technician Tool Mobile App access option – 10 users For up to 10 concurrent users for site per license. (No maintenance subscription included)	SXWSWMAPP00002
SW-MAP-3, Technician Tool Mobile App access option – 25 users For up to 25 concurrent users for site per license. (No maintenance subscription included)	SXWSWMAPP00003
SW-MAP-4, Technician Tool Mobile App access option – unlimited users For unlimited number of concurrent users for site per license. (No maintenance subscription included)	SXWSWMAPP00004

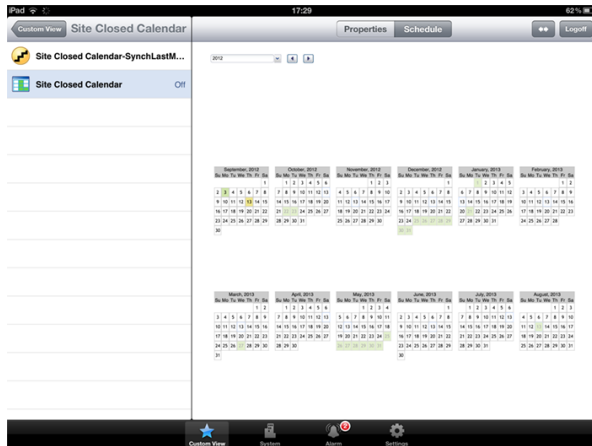


Figure: Calendars

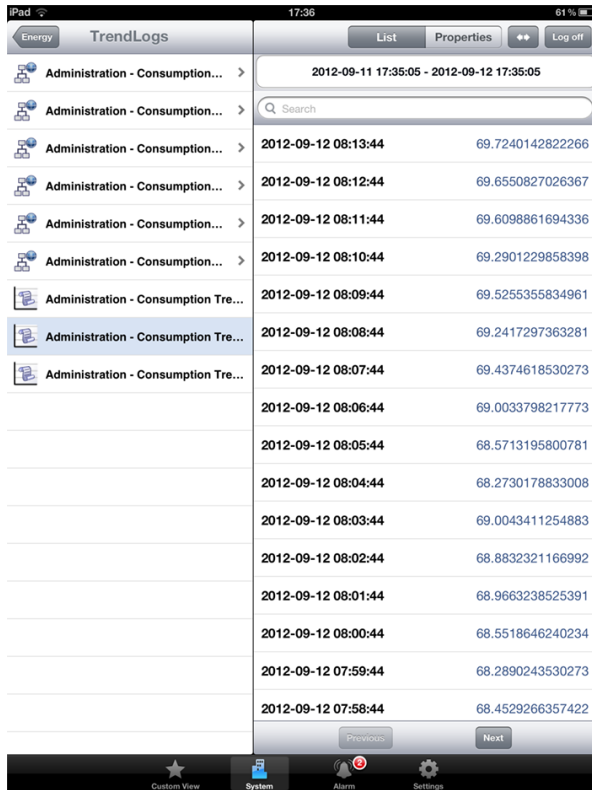


Figure: Trend log list



Figure: Alarms

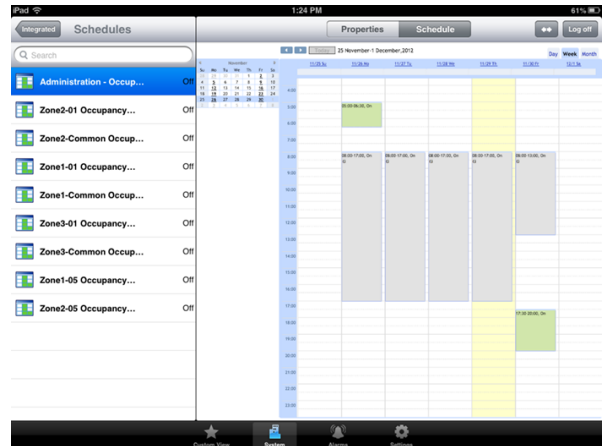


Figure: Schedules

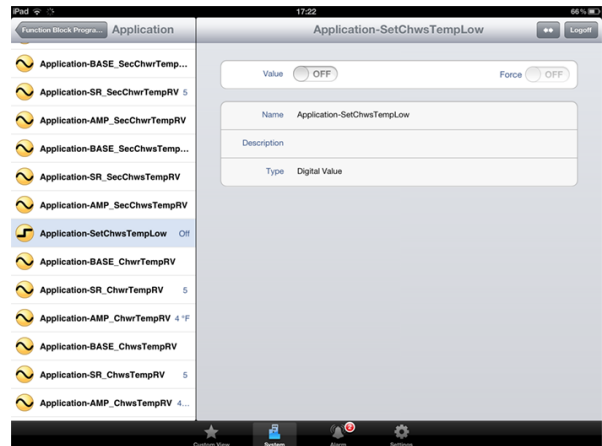


Figure: Program values

Trademarks and registered trademarks are the property of their respective owners.